



vola®



The original since 1968

VOLA created the modern tap in 1968. Following the original designs by Arne Jacobsen and Verner Overgaard, we combine exceptional Danish design with the traditions of craftsmanship and responsible manufacturing. Since the beginning, our products have been acclaimed for their purity of form, unrivalled quality and ageless simplicity. The iconic KVI kitchen mixer was admitted into MOMA's permanent design collection in 1974 and is displayed in Copenhagen's Designmuseum Denmark.

Architects and interior designers worldwide acknowledge VOLA as a true stamp of quality: the original, not an imitation. Our products are found in some of the most distinguished private houses and public buildings around the globe, pairing award-winning product design with award-winning architecture. The unique VOLA modular design system provides flexibility with an almost infinite range of product configurations in bold colours and timeless finishes. Our product proportions, true to the original forms designed in 1968, deliver an aesthetic consistency across spaces, places and time, enabling total design harmony.

From our factory in Denmark, we manufacture every product to order, using only the highest quality materials and the continued commitment to craftsmanship and attention to detail that is central to the VOLA ethos. The results are beautiful, hand-finished products that not only look and feel extraordinary, but also ensure the seamless integration of water into architecture for generations to come.

VOLA. For life.

Since 1968

- 4 At the forefront of Danish design since 1968
- 8 Encouraging conscious choices
- 10 The original modular system
- 12 A family of modular parts
- 16 Personalisation with colour and finish
- 18 Built to last generations
- 22 Made in Denmark

On design

- 26 Finding the essence
Jonas Bjerre-Poulsen — Norm Architects
- 28 Investing in wellbeing
Ilse Crawford — Studioilse
- 30 The past and present in unity
Thomas Lykke — OEO Studio

Our products

- 32 Basin
- 62 Kitchen
- 80 Bathroom
- 104 Shower
- 134 Spa
- 140 Hands-free
- 146 Round series
- 152 Towel warmers
- 160 Accessories



At the forefront of Danish design since 1968

Much has changed in the world since 1968, with consumption rising and resources decreasing, but we know from experience that good design can and should last for generations.

Danish design transcends trends and time. It is guided by the individual and by society, with the human experience at its core. VOLA has been rooted in these principles since the outset, with our products remaining true to the perfect proportions of Arne Jacobsen's original designs from 1968.

We have never changed the design of our products and never will. We only update the internal workings when essential, to enhance longevity and durability.

We know from experience
that good design can and
should last for generations.

In the process of continuously futureproofing, we offer internal updates to existing products to protect the investment made by our users. This helps to minimise their environmental footprint and demonstrates how functionality does not have to come at the cost of beauty.

Years of dedication to craft, materials and our original proportions have kept us at the forefront of Danish design and made VOLA a much imitated but never equalled design icon throughout the world.



111 A62

Left, one-handle built-in mixer with fixed spout and waste fitting, in 64 Brushed copper (Exclusive Colour Series).

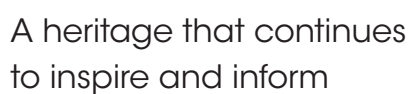
2411C

Two-handle built-in mixer in 19 Natural brass.





Below, the original VOLA drawing for the iconic KV1.



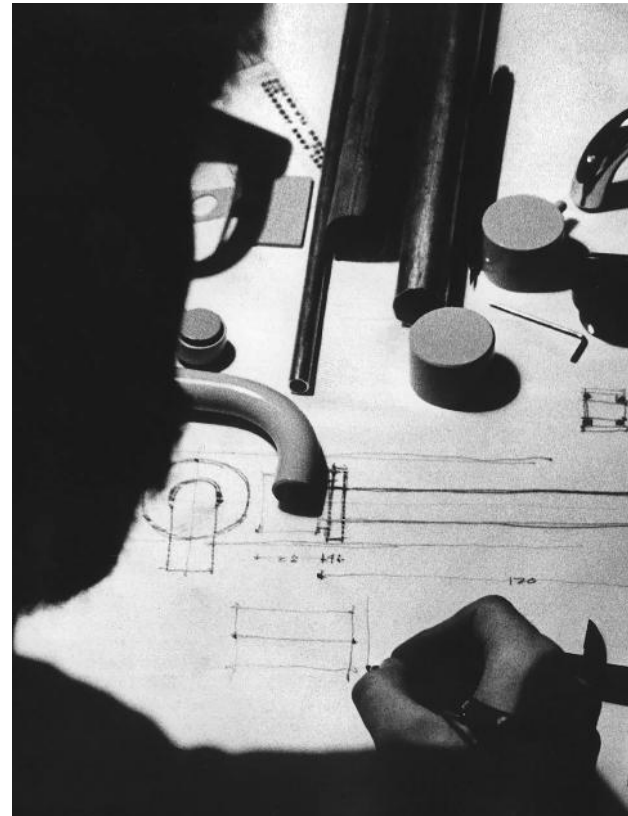
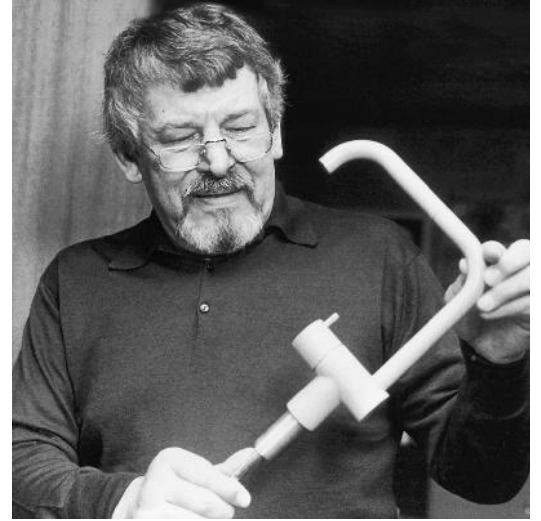
Shortly after Danish architect Arne Jacobsen won a competition in 1961 for his design of Denmark's Nationalbank he was contacted by Verner Overgaard, the owner of VOLA A/S, who introduced his proposal for a new type of wall-mounted mixer tap. Overgaard imagined a design where all the mechanical parts of the mixer were hidden, leaving only the handles and spout exposed. At the time, this was a completely new concept and Jacobsen realised that this idea combined with his functional approach to design had great potential. With that basic principle in mind, the simple VOLA design that we know today was conceived.

It was at Denmark's Nationalbank in 1968 that the iconic 111 VOLA tap made its first public appearance, attracting immediate international acclaim for the approach of 'total design' (Gesamtkunstwerk) in designing the architecture and everything inside.

With just the spout and lever visible, the 111 was the first fully-integrated, single-lever mixer tap. Prioritising function and proportion without compromising style, the new VOLA product became a celebrated classic and Jacobsen's design has changed little in over five decades.

From the original design VOLA went on to develop the unique, flexible, modular system that enables the user to combine and match individual components to suit any scheme.

We continue to stay true to our original principles of excellent design and functionality. This has been and always will be integral to how we think, design and manufacture. Much imitated but never equalled, VOLA has been the designers' choice since 1968.



Above, Arne Jacobsen. Top right, VOLA founder Verner Overgaard collaborated on the design of the original VOLA products: 111, HV1, KV1.

111

One-handle built-in mixer with fixed spout, in 40 Brushed stainless steel.



HV1

One-handle mixer with fixed spout, in 40 Brushed stainless steel.



KV1

One-handle mixer with double swivel spout, in 40 Brushed stainless steel.



Encouraging conscious choices

When the spaces and objects we interact with are honest and straightforward in function, design and materials, they give more value which is why we believe in buying less and buying better.

Being mindful of consumption has become part of a wider global movement but has been embedded in our DNA since the beginning. Good design puts people at the centre, benefitting the user, the environment and the maker, creating a cycle of wellbeing.

Natural materials' ability to work with time rather than against it is evident in well-crafted design that ages beautifully, rather than showing increasingly unflattering signs of use.

At VOLA, we craft our products with the aim that they will last for generations; that is why we ensure the flexibility and high standards of the internal parts for each product we make. This allows the user to update or repair their product instead of replacing it entirely. This is our most important responsibility in encouraging mindful consumption.



At VOLA, we craft our products with the aim that they will last for generations.



590M

Left and top right, one-handle mixer with double swivel spout and medium length lever (60 mm).

KV1

Above and right, one-handle mixer with double swivel spout.

All products in 19 Natural brass (patination in progress).





The original modular system

Since 1968 all our products have been designed and built to the same modular framework.

This continues to provide endless customisation, configuration and adaptability. It also allows for continuity of product aesthetic and colour throughout interior schemes.

Our unique modular system has many possible options, which is one of the reasons why we only make specifications to order in Denmark.

All our products, including those from 1968, will never become obsolete. The longer the lifespan of a product, the smaller its footprint.

590GM A62

Above and right, one-handle mixer with medium length lever (60 mm), swivel spout and waste fitting.

611C

Right, two-handle bath mixer with fixed spout.



We plan our products' endurance by designing them to be easily updated to extend their life and adapt to changing needs. Parts are still available for every VOLA product ever made. This ensures that they remain an investment for the future.

The greatest influence on a product's life cycle and impact is determined in the design phase, which is why we continue to design and build to the same original modular framework and always will.

This means that a product originally made and installed in the 1970s, for example, can be repaired and have its internal mechanisms updated whenever needed.

T39EL/4

Built-in modular heated towel rail, with four bars.

All products in
64 Brushed copper
(Exclusive Colour Series).



A family of modular parts

Part of what makes VOLA truly different is our unique modular system. Built on Arne Jacobsen's original proportions of the 111, HV1 and KV1 built-in mixers, the VOLA modular system's family of parts, including levers, handles, spouts and plates, are all interchangeable.

The modular system means that VOLA fits into any design scheme and allows customisation to respond to changing lifestyles and interior specifications.

Our products form a family of parts that work together to provide the greatest possible flexibility.

Handles and levers

There are a range of handles and levers to complement different lifestyles and preferences, creating maximum flexibility.

Extensions

Our products come in various spout and shower arm lengths and tap heights and can fit any bathroom.

Backplates

Backplates can be specified to easily fit within chosen tiling and interior schemes.

2111C

Left, one-handle bath mixer with fixed spout.

5474L-061

Left, thermostatic mixer with two-way diverter, wall-mounted Round head shower, hand shower and holder and backplate.

2112CM

Right, one-handle bath mixer with medium length lever (60 mm) with fixed spout and backplate.

All products in 28 Matt white.



201 090G A34

Right, one-handle wall mounted mixer with swivel spout and trap.

T39EL/4

Right, built-in modular heated towel rail with four bars.

2111C

Right, one-handle bath mixer with fixed bath spout.

All products in
19 Natural brass
(patination in progress).

Infinite flexibility built-in to suit any layout

Personalise your space with components that can be positioned to suit any scheme, including mounting and distance between each part. This is all possible because of the original design, where all the mechanical parts of the mixer are hidden.

**Mounting**

There are a variety of spout and handle-mounting options including deck-mounted, wall-mounted and free-standing, providing versatility and flexibility of installation for any bathroom design.

Order

Our products are flexible and can be arranged in a variety of ways to fit different spaces and preferences, making them highly functional.

Distance

The distance between products can be specified to suit your design. For example, you can select the space between the bars on the towel warmer to work with your preferred look and tile selection.

590G

Left, one-handle mixer with swivel spout, in 19 Natural brass.



Personalisation with colour and finish

Every VOLA product is available in a wide range of colours and metallic finishes, giving limitless creative possibilities. This variety means that VOLA is endlessly customisable, blending in or standing out within a design scheme as required.

Our hand-brushing is created using our unique method, delivering exceptional tactility. Each brushed component has its own brushing direction based on its shape to create the highest level of detailing that complements the whole form.

VOLA introduced colour to the bathroom in the 1970s and has continued to innovate in choice and finish.



590G

Left, one-handle mixer with swivel spout, in 15 Dark blue.

590H-500T1

Below, top left, one-handle mixer, hand shower and one-handle mixer and swivel spout, in 19 Natural brass (patination in progress).

2473-081D

Below right, one-handle mixer with two-way diverter, double-head shower, hand shower and holder and backplate, in 70 Brushed gold (Exclusive Colour Series).

590H

Below, bottom left, one-handle mixer with swivel spout, in 06 Light green.





Built to last generations

VOLA taps and accessories have been designed and made in Denmark since 1968. Our factory in Horsens is home to generations of dedicated craftspeople, all of whom take great pride in continuing our Danish heritage of design and craft excellence.

Our use of traditional craftsmanship and the most innovative engineering technology ensures that

every product achieves the highest standards of quality and durability. We only use the highest-grade stainless steel and brass and by prioritising one-off production over mass production we can ensure precision soldering, perfectly polished surfaces and individual hand testing.

Forming the perfect spout for the exact flow
By favouring one-off production over mass production we can ensure we produce accurate spout bends and flawless soldering, guaranteeing a precise flow of water for the perfect experience.



Quality control is paramount at every stage of production. Precision machining, grinding, brushing and polishing is used on superior grade solid stainless steel and brass, ensuring every VOLA product is meticulously shaped and beautifully finished.



A heritage of craft in every tap

Since 1968 VOLA has nurtured a dedicated team, from machinists to designers, and managers to metal-workers, all of whom take pride in upholding the VOLA reputation for excellence, passing on over five decades of skill and knowledge from generation to generation.



Our brushed stainless steel forms an integral component of the VOLA aesthetic. The technique has never been written down, instead it has been passed on by experienced craftspeople. We educate our experts from one generation to the next by passing on these skills and their specialised history. It has a distinctive and pure character whilst retaining high corrosion resistance perfect for high traffic schemes where durability and hygiene are of great importance.

It's only with great precision and attention to detail that we can deliver an exceptionally high-quality finish, retaining a minimal design and uncompromised form that will last for generations.

In addition, by adhering to our original design, the products last on an aesthetic level too, standing the test of time and transcending passing trends.

Made in Denmark

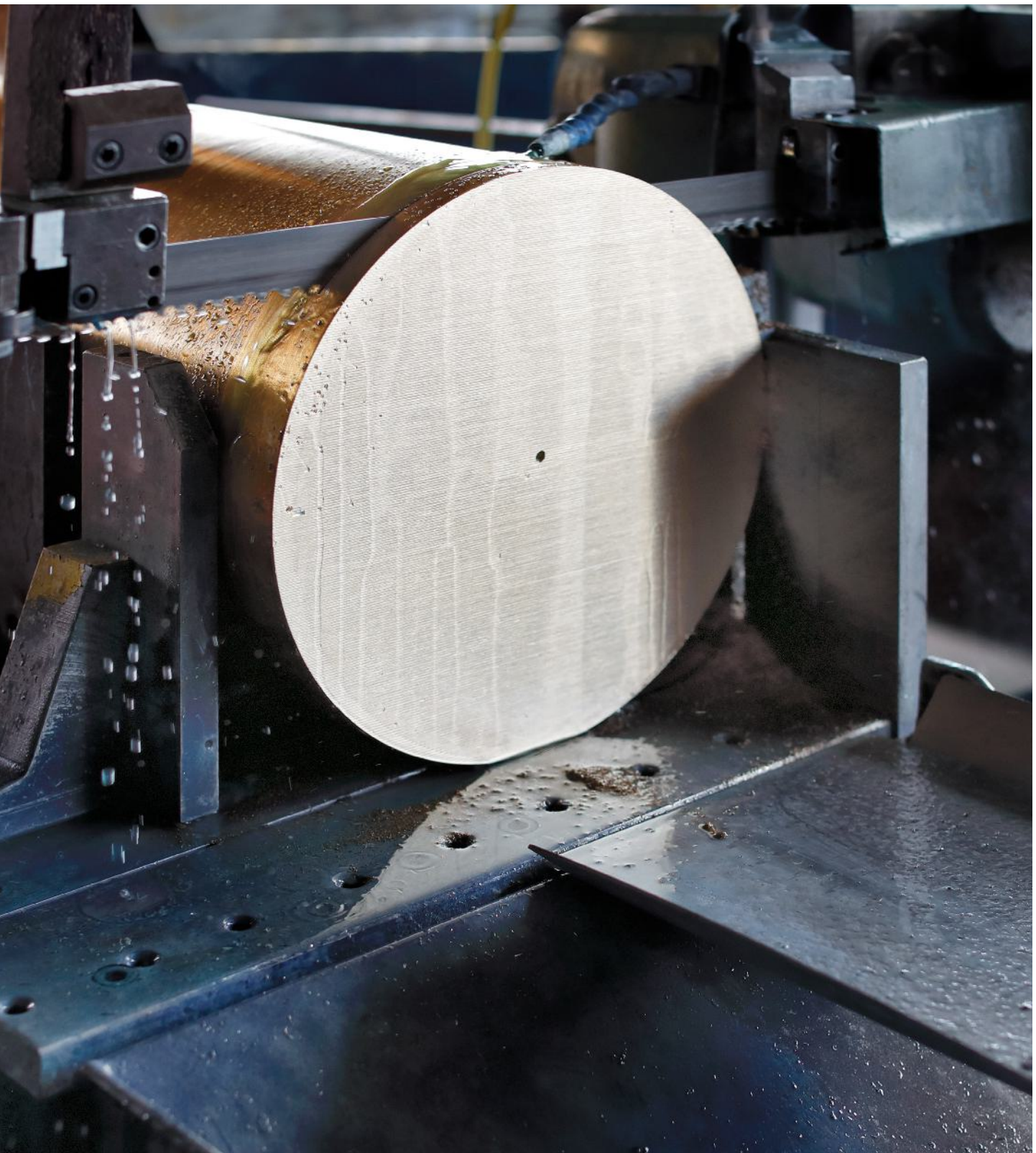
We manufacture only in Denmark, to lean principles, making each individual product to order. This is something we take very seriously, ensuring we maintain control of every aspect of production.

By not holding products in stock, we make efficient use of resources and reduce our energy consumption as well as the volume of materials used. This allows us to ensure quality throughout production.

We have an innovative, making-without-taking approach which drives recycling across our production. We recover and reuse the material

waste from production, allowing us to produce new products. Recycling our materials this way minimises material waste and reduces the need for new materials to be extracted from the earth.

Our 060 Round-head shower is sliced from a 600 kg solid brass or stainless steel cylinder which is then carved out to create the perfect cylindrical shape.





060 production

The inside is carved out, returned to the foundry and recycled into new cylinders.

With this method, each 600 kg cylinder of raw brass or stainless steel will ultimately yield 386 Round-head showers.



Recover, wash, reuse
We recover, wash and reuse the material waste from production, allowing us to produce new cylinders of brass and stainless steel to create new products.

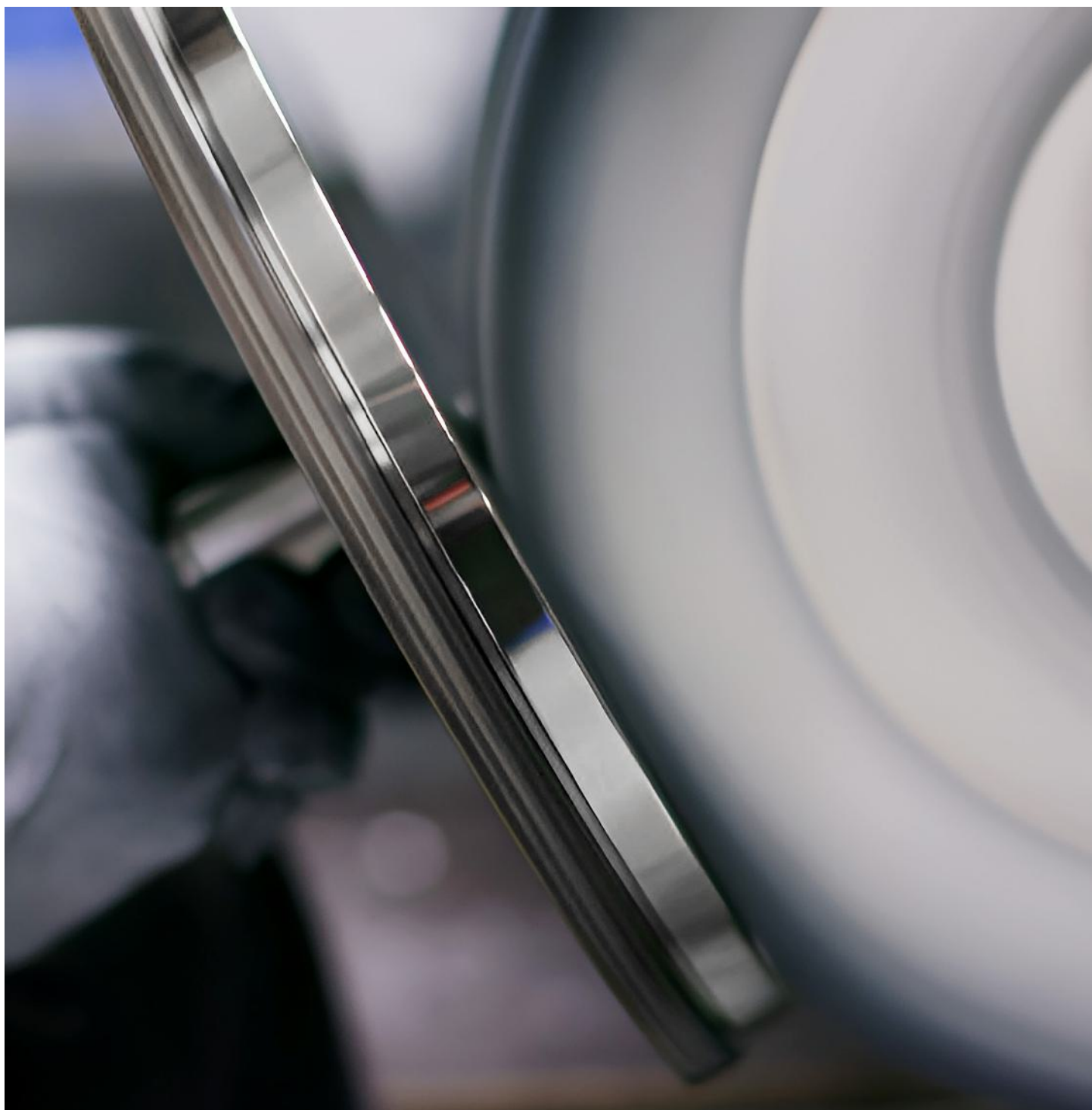


As Denmark has few natural resources, being mindful of consumption has been fundamental from the earliest days. This has contributed to the Danish focus on minimalism, enduring craft and pure design that continue to define the VOLA approach.

By using only the highest-grade solid materials, we can recover and reuse the material waste from production. Each cylinder of raw material will ultimately yield 386 Round-head showers.

Trends and temporary demands play no part in our approach. We only create and release a new product when there is a genuine need, or if an update is required to make the most of developments in technology and extend the life of our products.

Technological expertise is also evident in how the products deliver water, with the option to choose lower flow regulators in all our taps and mixers. These create bubbles in the flow to reduce the volume of water, ensuring you can configure and calculate the water consumption required.





JONAS BJERRE-POULSEN —
NORM ARCHITECTS

Finding the essence

The purpose of architecture and design is to address our instinct to dwell and create a framework for the essential human needs of safety, identity, belonging, and purpose. In response to a noisy and technologised world, essentialist design can then serve as our sanctuary. It may seem easy and effortless to create simple works. However, we find that eliminating the extraneous to emphasise the important is often more challenging than its opposite. There is nothing to hide behind.

We've slowly but surely been accustomed to desire temporary pleasures and acquisitions, until our lives are anything but simple. This has led to the minimising of fundamental human needs such as the connection to others, a sensory relationship with nature, a feeling of security and clarity about our role within the wider community. Ancient cultures have always known that the human mind needs quiet to focus on what is truly meaningful and joyful. So perhaps the question we ask ourselves today is quite simple: 'What can I live without?'



Fjord Boat House

Bottom left, uniquely located close to the water's edge on the border of Denmark and Germany, The Fjord Boat House is a peaceful retreat from everyday life.

590

Bottom left, one-handle mixer with double swivel spout, in 40 Brushed stainless steel.

The Audio

Below left, MENU's hybrid space for work, play, eat and sleep in Nordhavnen, Copenhagen.

Restaurant Äng

Below right, Michelin-starred restaurant within a Swedish, family-run winery creating dishes from home-grown produce.

Architecture and design have grappled with this tension between 'less' and 'more' for centuries and continue to play a vital role in the search for a spatial equilibrium that satisfies human needs and pleases the senses, while leaving enough freedom to dream. More than ever, today's designer requires extensive reflection on what matters in order to attain essentialism; adding and reducing elements until equilibrium emerges and remaining attuned to the atmospheric potential of space. If spaces and objects are to ascend to the level of truly timeless design, they should first recede a little to the background and leave room for the colour and complexity of life to be overlaid, giving time an opportunity to fill the void with meaning.

An essentialist mindset urges us to create well-made materials and spaces that last, rather than succumbing to passing trends or construction shortcuts. If the design reduces itself to its essence and nothing more, and if it is made intentionally, we're choosing a naturally more sustainable path.

Achieving simple yet sensuous spaces requires a sincere devotion to craftsmanship and an ambition to work with high-quality materials and detailing. It is more difficult to be selective than it is to be excessive, and it takes a great deal of skill to craft spaces and furniture that work well while hiding everything except the essentials.

If we aim for the virtues of simplicity and function while also considering the human experience, we can arrive at homes, workplaces, tables and chairs that are empathetically expressive. Like the products of modernism, these designs can avoid superfluous details and succeed in providing inclusive utility; they can also gently awaken our senses in a manner that feels helpful, honest and beautiful. The goal is to create lasting functional designs that work simply, and simply feel good.



Investing in wellbeing

Our reality is something we make: the objects we use, the spaces we live in. Our values are embedded in these, for better or worse.

We've all used things that seem ill-considered, yet product design is often discussed as a matter of style or 'just' aesthetics. We all can recognise when a space is careless, soulless and yet interiors are still usually considered an add-on, shoehorned into building projects at the end of the process. That's if there's any money left. But why? Surely 'life' should be embedded in the brief from day one.

As an interior designer, there is often the sense that so called 'soft' values matter less than the 'hard' values of architecture and construction, as if the life within the building is somehow secondary to the building itself. But after all is said and done, the environments we use form the backdrops to our lives. Our daily experience is built up of the accumulation of small moments where interiors, and the objects that make them, frame our daily lives. So asking what are the activities we do every day, or what spaces we, in reality, love to use, is pertinent.

Paying extra attention to these makes a huge difference to our daily life. It can make the normal, special – for public or private spaces.

The way we read objects and spaces is complex. We read our external world through our senses. And it is our senses – all 53 of them depending on how you slice them – that give us not only the measurable information we need but also the unmeasurable. They are another intelligence. We are still primal creatures - even if we increasingly inhabit a digital world. Our senses tell us if our surroundings are well made, dark, light, hot, cold, as well as what unmeasurable values they embody. Our senses are the interface between who we are and our environments. They are what make us feel alive; what makes life worth living. The Aaltos said that they always designed for the most sensitive person in the room. After all, if you design for the most sensitive, everybody wins. Ultimately, design is a tool that underpins our humanity.

How can we reintegrate these unmeasurable values into the measurable world? This approach to design is clearly not 'just' about the visuals, but about integrating palpable values. It means design addresses the lived experience and understands this from a physical and psychological perspective, both individual and social. Of course, this extra consideration for what makes life worth living shouldn't only focus on the end user. We are part of a bigger system. Today, our responsibility as designers is to work for better outcomes across the board — this is not only about





Ett Hem

With a rich Swedish heritage in design and architecture and a sensual palette of materials, Ett Hem is a hotel that feels like a welcoming home.

FS1

Far left, free-standing bath mixer with hand shower, in 19 Natural brass (patination in progress).

sustainability in the obvious way of checking sources etc., but also thinking of systemic wellbeing. So not only circularity — being interested in where things come from, who they sustain and where they go — but designing in a way that is long-lasting and adaptable. It also means design that looks to sustain skills and crafts in the modern world, and to elevate repair. Systemic wellbeing puts truly healthy, adaptable and sustainable environments at its heart.

The starting point for this change is that the all-important unmeasurable values are elevated to pole position from the outset, alongside the measurable ones. Because unless they are prioritised by all from the beginning, they will fall by the wayside. Secondly, the team, whether architects, interior designers or product designers, needs to work together, and be comfortable with being less visible as individuals in the outcome. These designers do not start from an idea of stylistic expression. These projects are well analysed and made with consideration and compassion for the user. They are thoughtfully manufactured with the

makers in mind, and with an eye for longevity and repairability. In order to create objects and interiors that seem natural, the role of the designer is closer to that of a conductor or choreographer. Reality is their starting point. These are the objects (and places) that last. Design is who we are. Design is what we stand for. And design is what we leave behind.

Everything we design and make can realise and materialise our imagined order. Design can make our values visible. It can present and communicate an alternative to current practice and we must stand up for this.

This is design that can change the way we live.



THOMAS LYKKE — OEO STUDIO

The past and present in unity

Denmark has come to signify good design and architecture, and I have often asked myself how such a small kingdom with less than six million people has become such a powerful design nation. I ask myself, what started this whole movement that has made Danish design famous worldwide — from architecture to furniture? What triggered this wave?

I was fortunate enough to grow up in Denmark surrounded by great design and architecture, where I was taught the values of quality and detail and was inspired to appreciate the sensibilities of design. I was also lucky enough to have a grandfather as a mentor and teacher to whom I owe my passion for beauty, craft and design.

I believe one of the reasons for Denmark's strength as a design nation is our size. We are too small to look inwards for inspiration and knowledge, which led generations of creators and innovators to look outwards for inspiration, adventure, new technology. This, I believe, was the case with turn-of-the-century Danish design and architecture and is still what guides us today, combined with our own inherent craftsmanship and respect for natural resources.

What has made the Danish design tradition so strong and unique is this outward-bound curiosity combined with our appreciation of simplicity, clean-lined aesthetics where form meets function, and our dedication to democratic thinking. A legacy guided by purpose, with an eye to sustainability and longevity. The vast catalogue of mid-century Danish design that is as relevant today as it was when originally inceptioned is mind-blowing.

In Denmark today, our contemporary drive within design has been guided by true locally-rooted creativity and originality as well as a strong sense of purpose with an eye to the bigger world around us. Being a creator myself and being deeply influenced by my upbringing, this is something I carry with me in my daily work. 'Standing on the shoulders of giants', as the saying goes. I believe this is very much the case with Danish design as a whole — we are all standing on the shoulders of our heroines and heroes.

Building on this enduring legacy, we also naturally evolve with our changing times, new needs and new technology. Past and present is perfectly merged to offer a more holistic approach to today's challenges.

Designmuseum Denmark

OEO Studio's sensitive refurbishment honours the original 1920s remodelled Frederiks Hospital by Danish architects Ivar Bentsen and Kaare Klint.

RS11/3

Bottom right, free-standing hands-free sanitiser gel dispenser, in 15 Dark blue.



There is an almost universal sense of timelessness and humanity to Danish design, a compelling design vernacular that feels welcoming, purposeful and unassuming.

We all choose to define our own path and direction. My approach is best described as 'Compelling Minimalism' and every day is a continuation of my journey, understanding and exploring our legacy's contemporary relevancy, for both the present and the future.







ORIGINAL PROPORTIONS

Basin

VOLA basin mixers include deck-mounted, wall-mounted and floor-standing options, all based on our original proportions and functionality. Our modular system means multiple products can be selected to create consistency throughout a scheme.

HV1

One-handle mixer with
fixed spout, in 40
Brushed stainless steel.



HV1
One-handle mixer
with fixed spout, in 40
Brushed stainless steel.



111 A62

One-handle built-in mixer
with fixed spout and slotted
push-operated waste plug,
in 20 Brushed chrome.

**121/300**

Above and right, one-handle built-in mixer with 300 mm fixed spout, in 40 Brushed stainless steel.

FS1

Shown above in mirror, free-standing bath mixer with hand shower, in 40 Brushed stainless steel.

121X/300

Far right, one-handle built-in mixer with 300 mm fixed spout with handle on right, in 40 Brushed stainless steel.





112

Top left, one-handle built-in mixer with fixed spout and backplate, in 19 Natural brass.

1513K

Bottom left, two-handle built-in mixer with fixed spout and backplate, in 40 Brushed stainless steel.



1521

Right, two-handle built-in mixer with fixed spout, in 19 Natural brass (patination in progress).







111X
Handle positioned
to the right of spout.



311
Handle positioned
above spout.



112M
Handle positioned to the left of spout
with medium length lever (60 mm)
and backplate.



112
Handle positioned to
left of spout with backplate.



1511
Two-handle mixer
with centred spout.

All images shown
are variants of the iconic
111 built-in mixer with
fixed spout, in 40 Brushed
stainless steel.

121M/300 500MT1
Left, one-handle built-in
mixer with fixed 300 mm
spout and one-handle
mixer with hand shower,
both with medium
length levers (60 mm), in
40 Brushed stainless steel.

A family of modular parts

The 111 VOLA product series exemplifies the VOLA modular system's flexibility and modularity. The innovative system enables integration and interchangeability of components, allowing users to easily specify the best solution to meet their needs.

This unrivalled adaptability enhances flexibility, enabling individuals to easily reconfigure and expand their specification as requirements evolve.



5281D 131M

Above, thermostatic mixer with double-head shower and one-handle built-in basin mixer with medium length lever (60 mm) and double swivel spout, in 27 Matt black.

311 A62

Right, one-handle built-in mixer with handle positioned above fixed spout and slotted push-operated waste plug, in 40 Brushed stainless steel.







4811

Above, built-in basin tap with hands-free sensor, in 19 Natural brass.

4913

Right, built-in basin tap with hands-free sensor and backplate, in 19 Natural brass.

4321

Left, built-in basin tap with hands-free sensor, in 64 Brushed copper (Exclusive Colour Series).





HV3
One-handle mixer with
fixed spout and pop-up
waste, in 40 Brushed
stainless steel.



RB1
Basin pillar tap with
fixed spout, in 40 Brushed
stainless steel.

HV1
Right, one-handle mixer
with fixed spout, in 40
Brushed stainless steel.

The original form

The HV1's timeless design, created by the iconic architect Arne Jacobsen in 1968, reflects a vision of simplicity, functionality and elegance, capturing the true essence of Danish design. The HV and RB series of pillar taps beautifully marries the nostalgia of the past with the demands of the present, offering a seamless integration of style and performance that continues to resonate with discerning customers worldwide.





HV1E T36
Basin mixer with
hands-free sensor and
deck-mounted soap
dispenser, in 40 Brushed
stainless steel.







KV1
One-handle mixer with
double swivel spout,
in 19 Natural brass
(patination in progress).

KV1
Left, one-handle mixer
with double swivel spout,
in 64 Brushed copper
(Exclusive Colour Series).



Natural brass and patination

Patination is an organic and beautiful process that occurs in natural brass over time if left unpolished. As natural brass is exposed to air, moisture and other environmental factors, a thin layer of tarnish or oxidation forms on its surface. This layer not only protects the brass from further corrosion but also gives it a unique and aesthetically pleasing appearance. The colours and patterns that emerge during the patination process are determined by the specific environmental conditions, resulting in a wide range of hues and textures that add to the natural beauty of the brass. Unlike artificial processes, patination is a natural and ongoing transformation that adds to the charm and character of natural brass. As this is a natural process every instance will be unique. The images to the right show an indicative representation of what you might expect as the patination process occurs.



The 590 spout

All images shown are variants of the 590 built-in mixer with double swivel spout.

590M

Left, one-handle mixer with medium length lever (60 mm) and double swivel spout, in 19 Natural brass (patination in progress).

590

Top right, one-handle mixer and double swivel spout, in 19 Natural brass.

590M T36

Middle right, one-handle mixer with medium length lever (60 mm), double swivel spout and soap dispenser, in 19 Natural brass (patination in progress).

KV4

Bottom right, two-handle mixer and double swivel spout, in 19 Natural brass (long-term patination).





FS2
Free-standing
wash basin mixer with
double swivel spout,
in 27 Matt black.

FS2
Free-standing wash basin
mixer with double swivel
spout, in 40 Brushed
stainless steel.



590G
One-handle mixer with swivel
spout, in 27 Matt black.

590V
Right, one-handle mixer with
swivel spout, in 19 Natural brass
(patination in progress).





590G T36, 590H T36

Two one-handle mixers with swivel spouts, with deck-mounted soap dispensers, in 16 Polished chrome. Spout G shown above and right, spout H shown far right.







The 590H spout

All images are variants of the 590 built-in mixer, in 19 Natural brass.

The letters A, G and H refer to the size of the spout. The smallest spout height is 110 mm (090A) and the tallest is 355 mm (090V) (see page 57).

590HL

Left, one-handle mixer with long length lever (100 mm) and swivel spout, in 40 Brushed stainless steel.



590A

Top right, one-handle mixer with swivel spout. Height 110 mm.

590G

Middle right, one-handle mixer with swivel spout. Height 185 mm.

590H

Top left and bottom right, one-handle mixer with swivel spout. Height 265 mm.

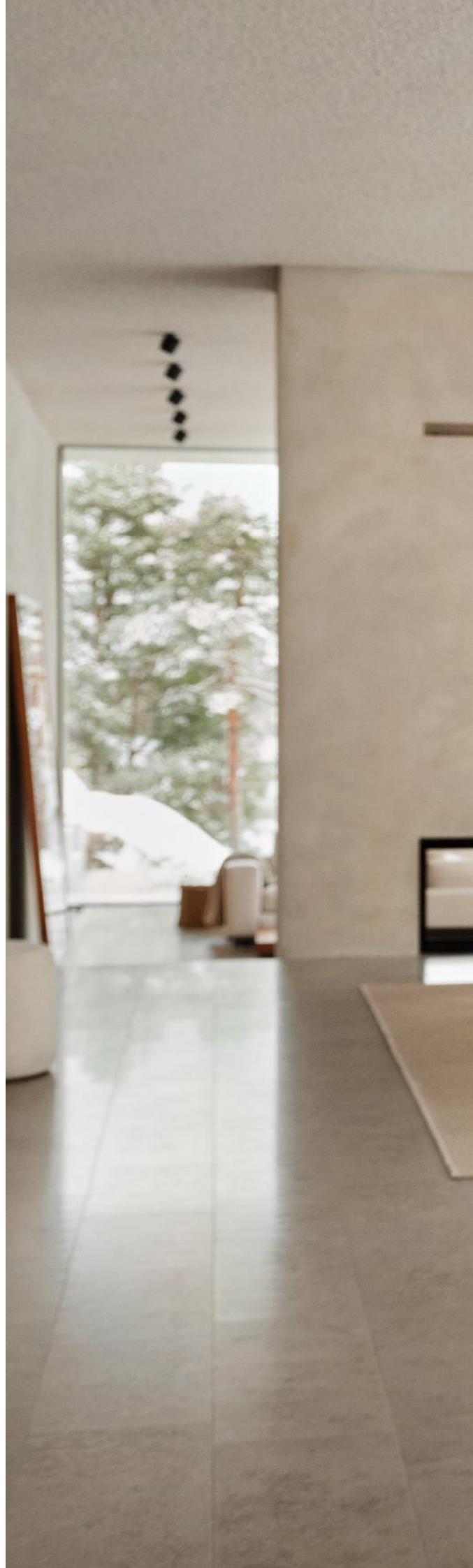
THE HEART OF THE HOME

Kitchen

Our range of kitchen mixers allows you to create a personalised space in the heart of your home. Our modular system flexes to fit your design, including the positioning of mixer handles, hand showers and soap dispensers.

KV1-500T1

One-handle mixer with double swivel spout, paired with the one-handle mixer and hand shower, in 40 Brushed stainless steel.







KV1
Above and right,
two back-to-back
one-handle mixers with
double swivel spouts,
in 19 Natural brass.







KV1

Left, one-handle mixer with double swivel spout.

KV1M

Above, one-handle mixer with double swivel spout and medium length lever (60 mm).

All products in 70 Brushed gold (Exclusive Colour Series).





KV4

Left and above,
two-handle mixer with
double swivel spout,
in 21 Carmine red.



590
Above and right,
one-handle mixer with
double swivel spout,
in 20 Brushed chrome.





500T1-590

One-handle mixer with double swivel spout, paired with the one-handle mixer and hand shower, in 40 Brushed stainless steel.

590M

Right, one-handle mixer with double swivel spout and medium length lever (60 mm), in 16 Polished chrome.









590H

Above, one-handle
mixer with swivel
spout, in 06 Light green.

590H

Left, one-handle
mixer with swivel
spout, in 02 Grey.



590H-500T1

One-handle mixer with swivel spout, paired with the one-handle mixer and hand shower, in 70 Brushed gold (Exclusive Colour Series).



590H-500T1

One-handle mixer with swivel spout,
paired with the one-handle mixer and
hand shower, in 19 Natural brass
(patination in progress).



321/200

One-handle built-in mixer with 200 mm spout with handle positioned above the spout, in 63 Copper (Exclusive Colour Series).



131X

Above, one-handle built-in mixer with double swivel spout with handle positioned to the right of spout, in 70 Brushed gold (Exclusive Colour Series).

132

Bottom left, one-handle built-in mixer with double swivel spout and backplate, in 28 Matt white.

631

Bottom right, two-handle built-in mixer with double swivel spout, in 70 Brushed gold (Exclusive Colour Series).

THE JOY OF WATER

Bathroom

Our wide range of bathroom taps — floor-standing, deck-mounted and wall-mounted — are designed to inspire and provide an escape from the stresses of everyday life. With a range of regulators, the flow of water can be adjusted to your preference.

FS1

Free-standing bath mixer
with hand shower, in
40 Brushed stainless steel.







T39EL/3

Above, built-in
heated modular towel
rail with three bars.

FS1

Above and right,
free-standing bath
mixer with hand shower.

All products in
16 Polished chrome.





090FM

Left, floor-mounted swivel bath spout, in 19 Natural brass (patination in progress).

090FM 2471

Top right, one-handle built-in mixer with floor-mounted swivel bath spout, hand shower and holder, in 19 Natural brass (patination in progress).

090FM

Bottom right, details in 19 Natural brass.
Right, polished. Far right, patination in progress.

Natural brass will patinate over time if left unpolished. As this is a natural process, every instance will be unique. The images to the right show an indicative representation of what you might expect as the patination process occurs.

The 090FM floor-mounted swivel bath spout has four height options. From floor to outlet: 800 mm (as standard and as shown), 700 mm, 900 mm and 1000 mm.







T15

Left, towel holder.

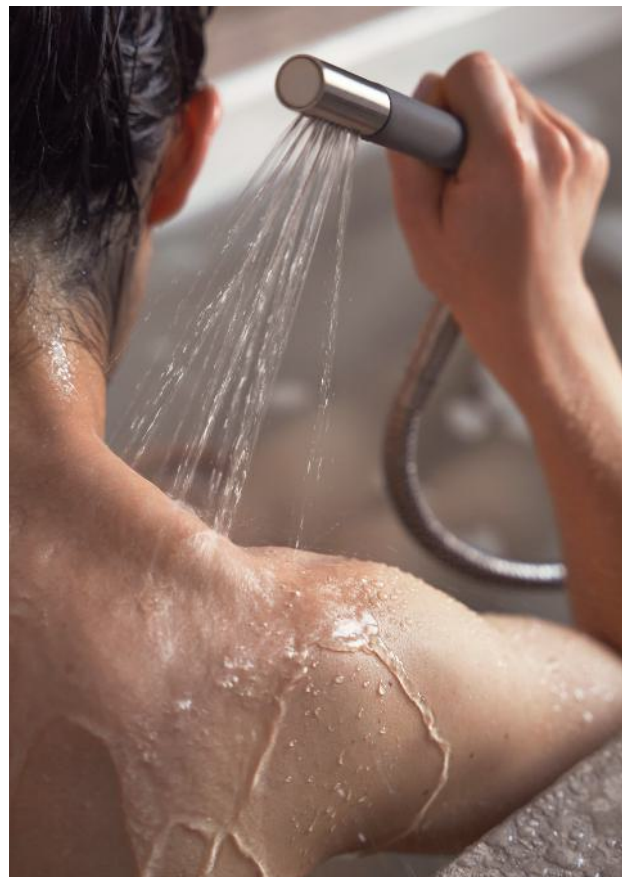
SC11

Left and above right, two-handle mixer with double swivel spout, paired with the one-handle mixer and hand shower.

T1

Bottom right, deck-mounted pull-out hand shower with hose.

All products in 40
Brushed stainless steel.







SC3 A24

Left, one-handle mixer, bath filler with overflow and pop-up waste (not shown) and one-handle mixer with hand shower.

Left and above, in 20 Brushed chrome and right, with varying handle spacing, in 28 Matt white.





COMBI-40

One-handle mixer (flexible handle positioning)
with fixed spout bath filler, in 19 Natural brass.





2111C T39EL/3

Left, one-handle built-in mixer with fixed bath spout and built-in modular heated towel rail with three bars.

2111C

Right, one-handle built-in mixer with fixed bath spout.

All products in
64 Brushed copper
(Exclusive Colour Series).







611C

Left, two-handle built-in mixer with fixed bath spout, in 64 Brushed copper (Exclusive Colour Series).

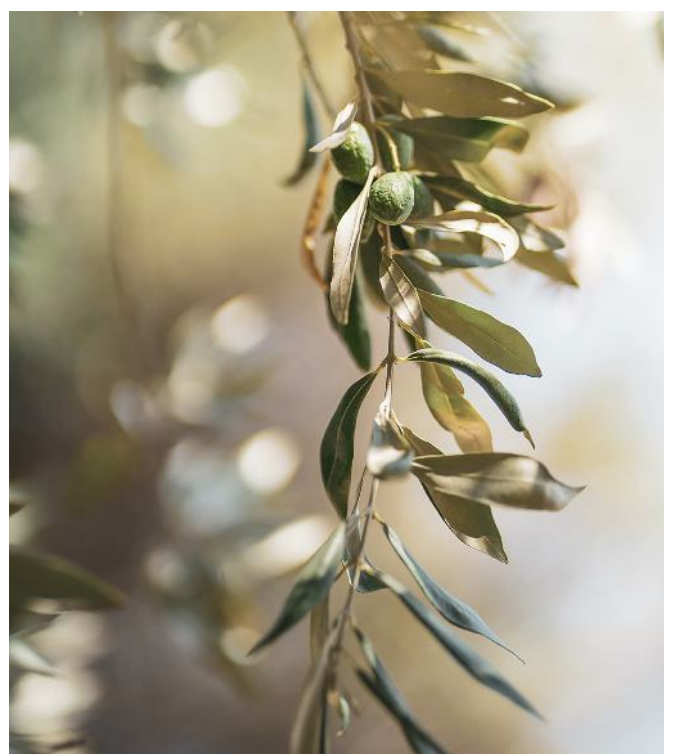
2411C-071

Above, two-handle built-in mixer with two-way diverter, fixed bath spout and hand shower with holder, in 62 Deep black (Exclusive Colour Series).





811C-071
Two-handle built-in
mixer with two-way
diverter, fixed bath spout
and hand shower with
holder, in 40 Brushed
stainless steel.





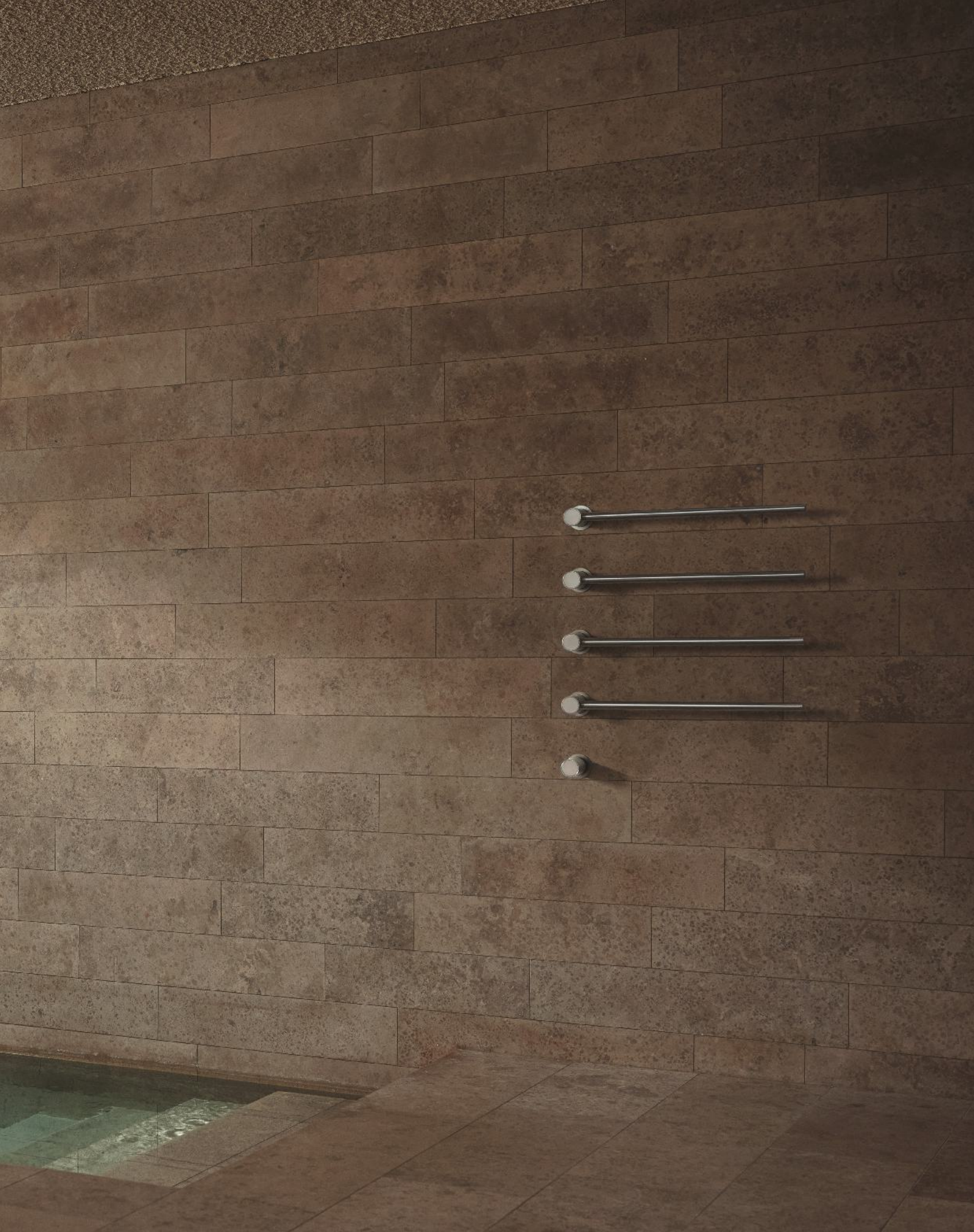
BK7
One-handle mixer with swivel
spout bath filler, in 16 Polished chrome.





COMBI-31

Waterfall shower and built-in stop valve,
in 40 Brushed stainless steel.



T39EL/4

Built-in modular heated towel rail with
four bars, in 40 Brushed stainless steel.





2141DT8

One-handle mixer
with bath spout,
diverter and hand
shower with holder,
in 19 Natural brass.





INVIGORATE

Shower

VOLA shower mixers effortlessly control water temperature and flow, each designed to deliver a specific experience. VOLA has spent many years understanding how water flows, feels and how it influences our wellness on a daily basis. With our versatile range of mixers, you can transform your daily routine in any space.

5471S-061

Thermostatic mixer with two-way diverter, wall-mounted Round-head shower and Round-head hand shower with holder, in 40 Brushed stainless steel.

**5471S-061A**

Above, thermostatic mixer with two-way diverter, ceiling-mounted Round-head shower and Round-head hand shower with holder, in 64 Brushed copper (Exclusive Colour Series).

COMBI-27S 2281D

Right, thermostatic mixer with three-way diverter, ceiling-mounted Round-head shower, Round-head hand shower with holder and double-head shower. Paired with a one-handle mixer with double-head shower. All in 19 Natural brass (patination in progress).





080D

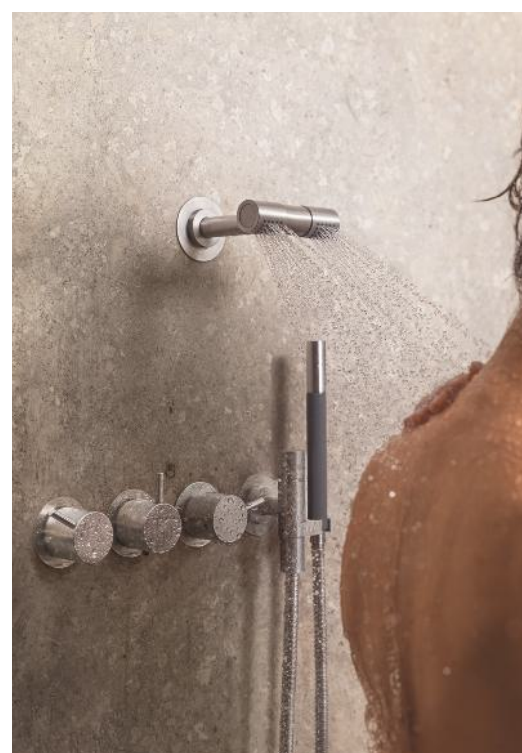
Top left, double-head shower.

COMBI-26S

Right, thermostatic mixer with three-way diverter, wall-mounted Round-head shower, double-head shower and Round-head hand shower with holder.

All products in 40 Brushed stainless steel.





COMBI-26

Above left, thermostatic mixer with three-way diverter, wall-mounted Round-head shower, double-head shower and hand shower with holder, in 40 Brushed stainless steel.

The 080D can be positioned at shoulder height for showering without wetting hair.

2261

Right, one-handle mixer with wall-mounted Round-head shower, in 19 Natural brass (patination in progress).





COMBI-27S SC8

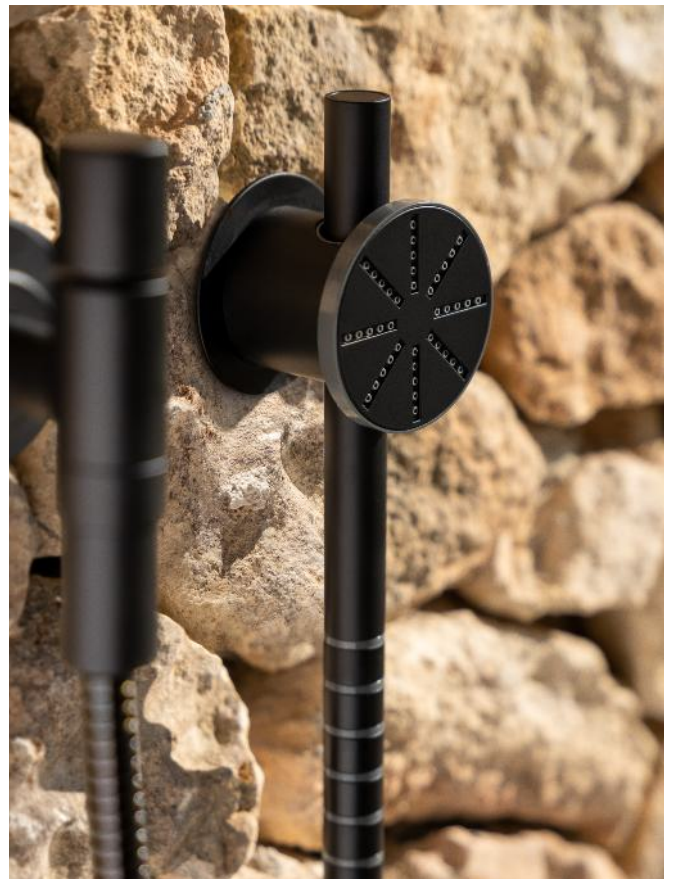
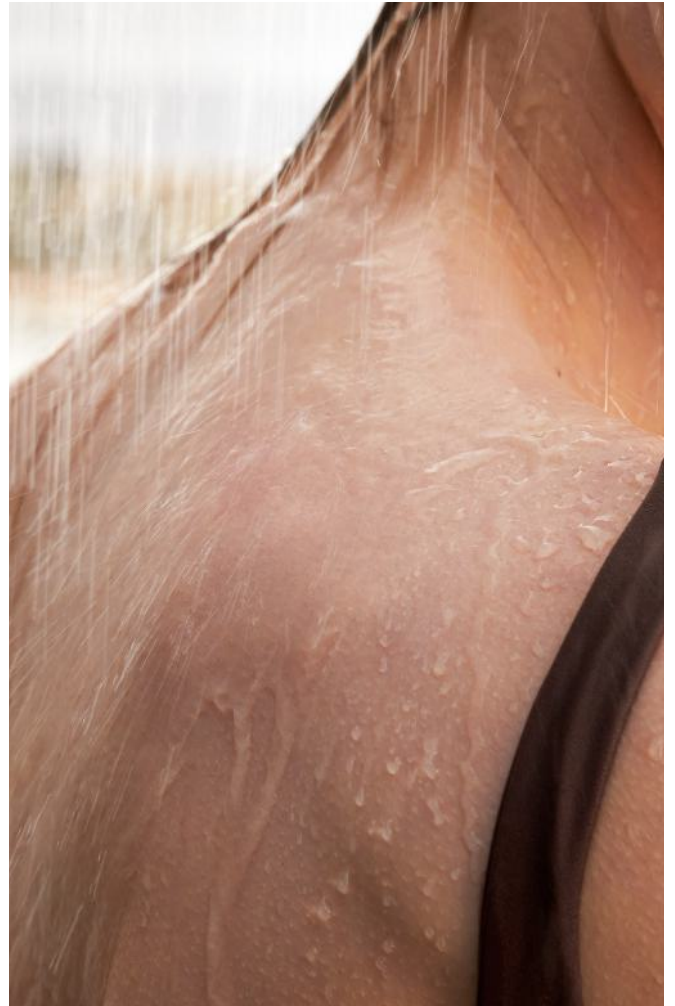
Above, thermostatic mixer with three-way diverter, ceiling-mounted Round-head shower, double-head shower, Round-head hand shower with holder. Two-handle mixer with swivel spout bath filler, in 16 Polished chrome.

COMBI-26S

Right, thermostatic mixer with three-way diverter, wall-mounted Round-head shower, double-head shower and Round-head hand shower with holder, in 61 Brushed black (Exclusive Colour Series).







070S

Right, Round-head
hand shower, hose,
and holder.

5471S-061

Left, thermostatic mixer
with two-way diverter, wall
mounted round-head shower,
Round-head hand shower
with holder.

All products in 27 Matt black.

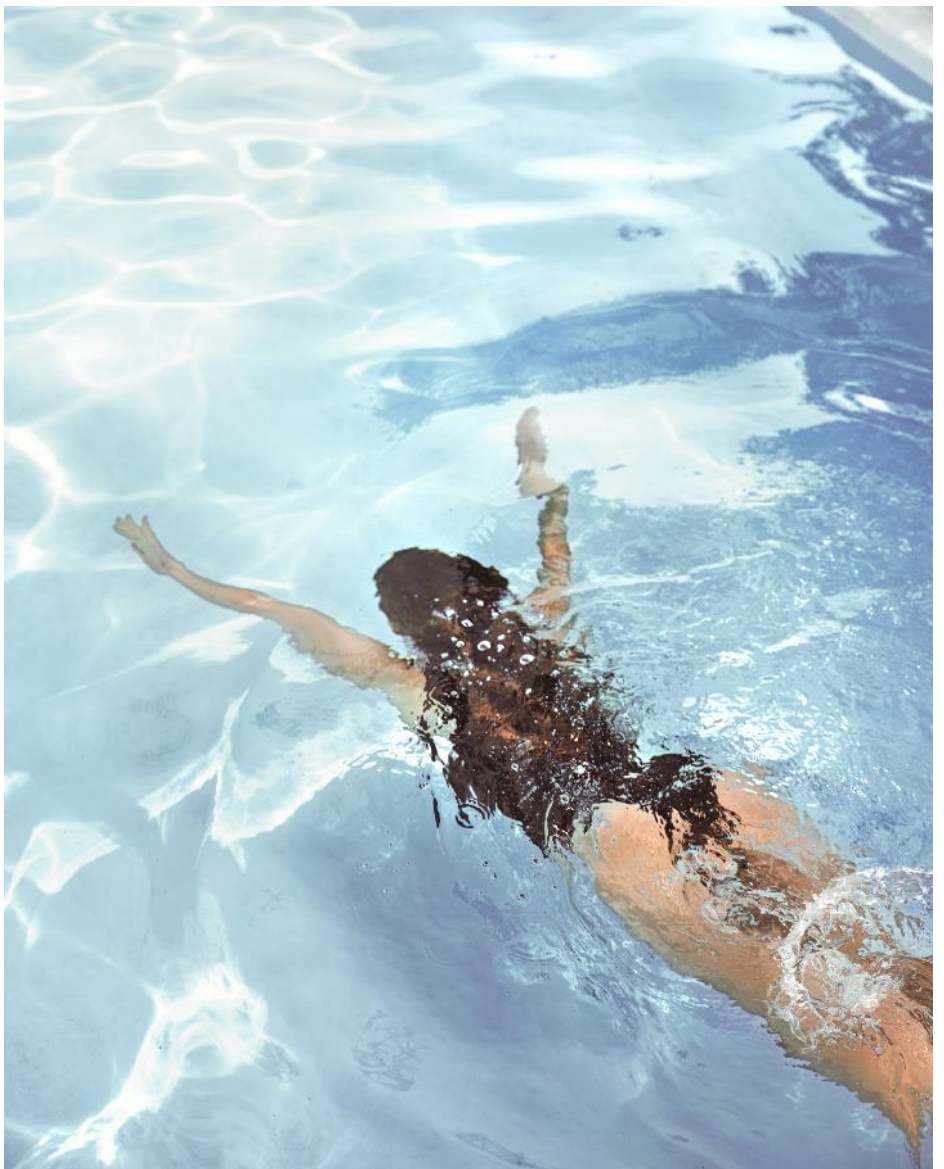


FS3

Free-standing thermostatic shower with
hand shower, in 20 Brushed chrome.







5171RT34
Left and above,
thermostatic mixer,
hand shower with
holder, and shower rail,
in 20 Brushed chrome.





172T9

Left, one-handle mixer, hand shower with holder and backplate, and high-mounted hand shower holder.

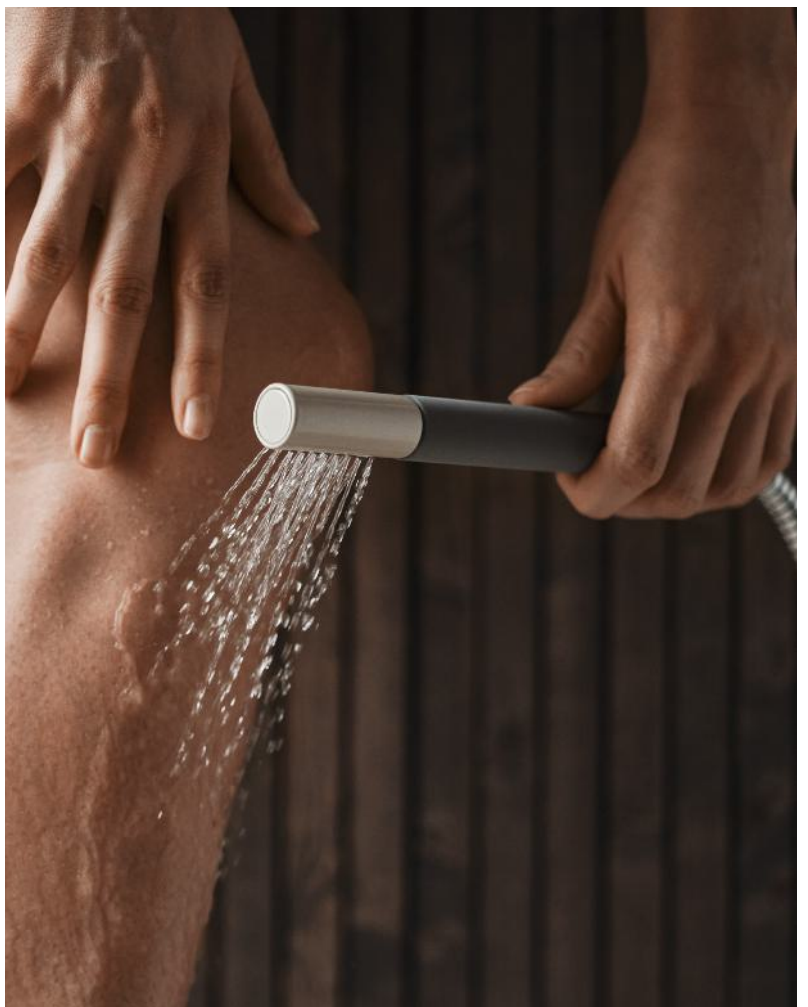
T9

Top right, high-mounted hand shower holder for use as a wall-mounted shower.

T2

Bottom right, hand shower with 1500 mm hose.

All products in 02 Grey.





5171S-T65

Right, thermostatic mixer, Round-head hand shower and shower rail (standard length 700 mm).

T65

Bottom left, Round-head hand shower.

T39EL/5

Right, built-in modular heated towel rail, with five bars.

All products in 40 Brushed stainless steel.







080

Top right,
wall-mounted
single-head shower.

080D

Bottom right,
wall-mounted
double-head shower.

Both products
in 27 Matt black.



2111CM 2281

Left, one-handle mixer with fixed
bath spout and medium length lever
(60 mm). Paired with one-handle
mixer and wall-mounted single-head
shower, in 40 Brushed stainless steel.





080W

Above left, waterfall shower.

5481W-081D

Left, one-handle mixer with diverter and thermostatic mixer, with wall-mounted double-head shower and waterfall shower placed as a bath filler.



080D

Above right, wall-mounted double-head shower.

All products in
40 Brushed stainless steel.





COMBI-33

Left, thermostatic mixer with two-way diverter, waterfall shower and hand shower with holder.



5471R

Above right, thermostatic mixer with two-way diverter and hand shower with 1500 mm hose.

All products in 27 Matt black.





COMBI-29

Left, thermostatic mixer with two-way diverter, wall-mounted head shower, fixed bath spout and hand shower with holder.

T39EL/4

Left, built-in modular heated towel rail with four bars.

080ST

Top right, head shower, 500 mm.

All products in 40 Brushed stainless steel.



**COMBI-28**

Above, thermostatic mixer with three-way diverter, wall-mounted head shower, with double-head shower and hand shower with holder, in 40 Brushed stainless steel.

5252

Right, thermostatic mixer with backplate, with wall-mounted head shower, in 20 Brushed chrome.



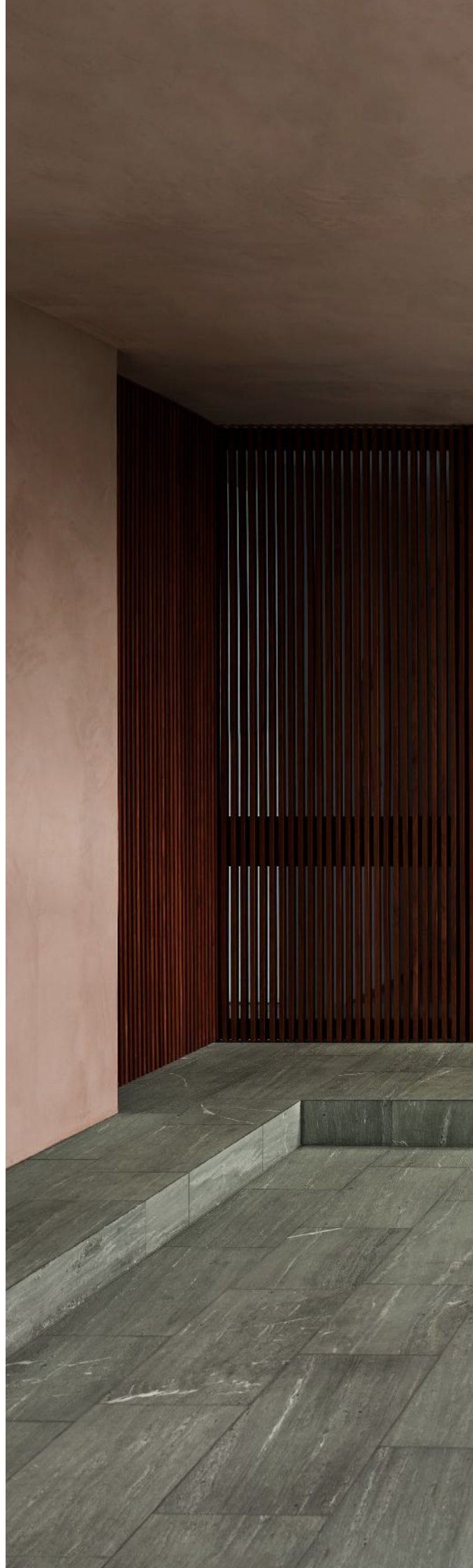
CREATE A SANCTUARY

Spa

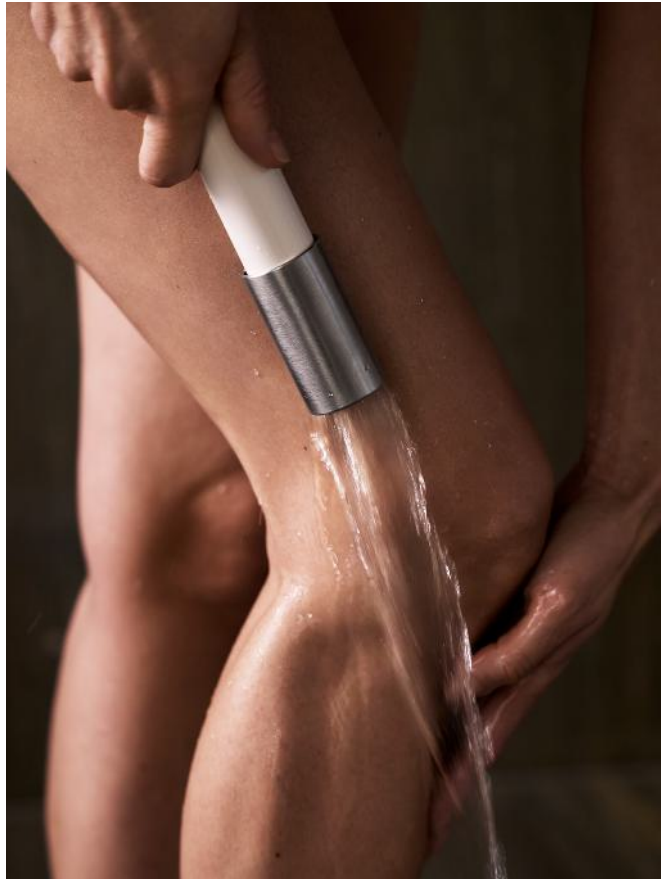
VOLA is featured in some of the world's most luxurious spas and home environments. Our selection of spa mixers offers all you need to unwind and escape, delivering an experience like no other.

COMBI-32

Two-handle mixer with waterfall shower, and Kneipp hose, in 40 Brushed stainless steel.







070W

Above, Kneipp hose.

T39EL/4

Right, built-in modular heated towel rail with four bars.

COMBI-32

Right, two-handle mixer with waterfall shower and Kneipp hose.

All products in 40 Brushed stainless steel.





COMBI-1

Two-handle mixer with two-way diverter, six shower heads/body jets and hand shower with holder, in 02 Grey.



COMBI-18

Thermostatic mixer with three-way diverter, ceiling-mounted Round-head shower, four adjustable body jets, and hand shower with holder, in 62 Deep black (Exclusive Colour Series).

INTUITIVE SOLUTIONS

Hands-free

The VOLA Hands-free collection offers an intuitive solution to demands for hygiene and convenience. Each hands-free unit marries thoughtfully considered proportions with smart integration of technology. The family of mixers, dispensers, sensors and bins are available in all our colours and finishes to seamlessly fit into any interior architectural scheme.

The Hands-free collection provides the confidence of contactless hygiene with optimum style.

RS11B/3

Free-standing hands-free gel, foam and soap dispenser, in 15 Dark blue with black cylinder.





TICKETS
BILLETTER

EXHIBITIONS
UDSTILLINGER





RS11W/2

Top left, table-mounted, in 70 Brushed gold (Exclusive Colour Series) with white cylinder.

RS11B/1

Top right, wall-mounted, in 40 Brushed stainless steel with black cylinder.

RS11B/3

Bottom left, free-standing, in 15 Dark blue with black cylinder.

RS11B/3

Bottom right, free-standing, in 70 Brushed gold (Exclusive Colour Series) with white cylinder.

RS11B/3

Right, free-standing, in 40 Brushed stainless steel with black cylinder.

Three configurations for any environment

The RS11 is adaptable for dispensing hand sanitiser spirit, foam, fluid and gel soap and can be configured as free-standing, wall-mounted or table-mounted. Each uses the same sized cylinder in black or white with a one-litre capacity. The metallic elements can be specified in the entire VOLA colour range and Exclusive Colour Series.





RS11W/1 4321

Above, wall-mounted hands-free gel, foam and soap dispenser. Paired with the built-in basin tap with bottom-aligned hands-free sensor.

RS11W/1 4821

Right, wall-mounted hands-free gel, foam and soap dispenser. Paired with the built-in basin tap with right-aligned hands-free sensor.

All products in 70 Brushed gold (Exclusive Colour Series). RS11s shown with white cylinder.







FUNCTIONAL BEAUTY

Round series

The VOLA Round series products epitomise Danish design's fusion with functionality. Marked by minimalist circular forms, these fixtures, including taps and accessories, embody both simple forms and utility. Meticulously crafted and employing premium materials, the Round series redefines contemporary luxury in interior design.

RS10 4321

Electronic soap dispenser, in white, with 40 Brushed stainless steel surround. Paired with the built-in basin tap hands-free sensor, in 40 Brushed stainless steel.

The fully integrated RS10 soap dispenser's motion detectors dispense the perfect portion of foam or liquid soap, while the 4321 sensor-operated tap delivers water with a wave of the hand.



RS2
Top left, built-in
tissue dispenser.

RS10
Top right, built-in
soap dispenser.

RS3
Bottom left,
retrofit waste bin.

RS1
Bottom right,
built-in waste bin.

RS1 RS2 4821
Right, built-in waste
bin and built-in tissue
dispenser. Paired with
the built-in basin tap with
hands-free sensor, in 40
Brushed stainless steel.

RS products shown in
white with 40 Brushed
stainless steel surround.





4311 RS10

Above and right, built-in basin tap with hands-free sensor in 70 Brushed gold (Exclusive Colour Series) shown with electronic soap dispenser.

RS1

Right, built-in waste bin.

RS products shown in white with 70 Brushed gold (Exclusive Colour Series) surround.



ARCHITECTURAL EXPRESSION

Towel warmers

VOLA towel warmers mirror the sleek lines and proportions of the original VOLA product range, creating a cohesive aesthetic throughout the bathroom.

5471S-061

Thermostatic mixer with two-way diverter to wall-mounted Round-head shower and Round-head hand shower with holder.

T39EL/6

Built-in modular heated towel rail with six bars.

All products in 40 Brushed stainless steel.







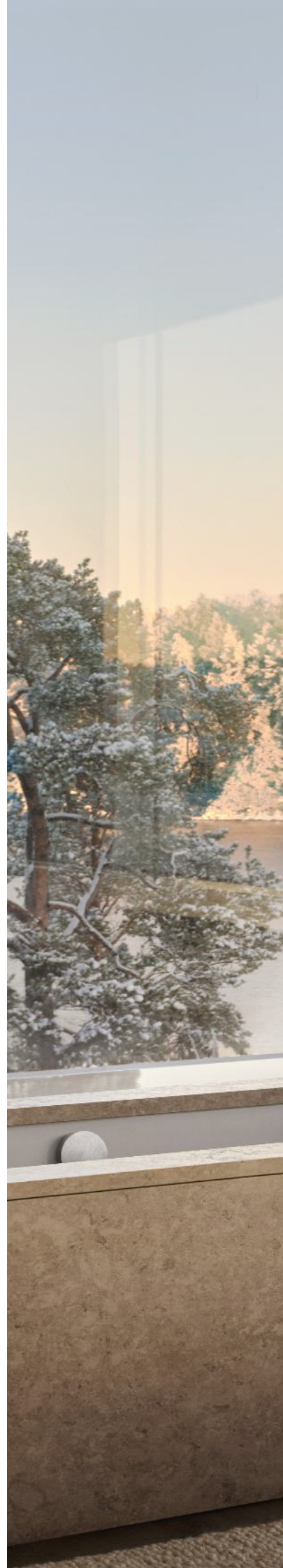
T39EL/6

Above and right, built-in modular heated towel rail with six bars.

SC4 A24

Right, two-handle mixer, bath filler with overflow and pop-up waste and one-handle mixer with hand shower.

All products in 40
Brushed stainless steel.







The T39 towel warmer is an architectural expression of our modularity

The T39 has been designed as a flexible system varying in number of bars and spacing, allowing it to fit any tiling layout or design scheme. The installation can be expanded from three to 20 rails with custom spacing from 100 mm to 300 mm between. Available in every VOLA colour and finish, the T39 pairs effortlessly with all our products to create a unified bathroom aesthetic.

T39EL/4 5471S-061

Left, built-in modular heated towel rail with four bars. Thermostatic mixer with two-way diverter with wall-mounted Round-head shower and Round-head hand shower with holder.

T39EL/3 611C

Right, built-in modular heated towel rail with three bars and two-handle built-in mixer with fixed bath spout.

All products in
64 Brushed copper
(Exclusive Colour Series).



T39EL/6

Six bars with centre distance between bars of 150 mm.



T39EL/4

Four bars with centre distance between bars of 200 mm.



T39EL/3

Three bars with centre distance between bars of 300 mm.

All products in 40 Brushed stainless steel.

COMBI-27S 2281D

Partially shown in mirror,
thermostatic mixer with
three-way diverter, ceiling-
mounted Round-head
shower, Round-head hand
shower with holder and
double-head shower. Paired
with a one-handle mixer
with double-head shower.

T39EL/4

Built-in modular heated
towel rail, with four bars.

T18

Towel hook, 56 mm.

590G

One-handle basin
mixer with swivel spout.

All products in
19 Natural brass
(patination in progress).









SEAMLESS DESIGN

Accessories

All our accessories are designed and crafted to perfectly blend with our wider product range, enabling you to match colour and finish across your scheme.

From left to right:

A83
Dual flush buttons.

T12-BP
Toilet roll holder
without backplate.

T33
Wall-mounted toilet
brush holder.

T18
Towel hooks.

T39EL/3
Built-in modular heated
towel rail, with three bars.

T10JR
Soap dispenser.

590H
One-handle basin
mixer with swivel spout.

A34
Waste trap.

All products in
16 Polished chrome.

Left to right, top to bottom and opposite:

T10JR T10

Soap dispensers.
T10JR holds 0.25L.
T10 holds 0.5L.

A85

Dual flush plate.

T20

Mirror holder.

T12

Toilet roll holder
with backplate.

T33

Wall-mounted toilet
brush holder as
detail and in full.

T19

Towel rail.

Opposite:

111

One-handle built-in
mixer with fixed spout.

A34

Waste trap.

All products in 40
Brushed stainless steel.









Left to right, top to bottom and opposite:

T12-BP

Toilet roll holder without backplate as detail and in full.

T14

Spare toilet roll holder.

RS83E

Electronic dual flow cistern flush.

T23

Grab rail.

T17

Towel hook, 28 mm, 4 pcs. Also available at 56 mm. (T18).

RS82E

Electronic single cistern flush.

111

Left, one-handle built-in mixer with fixed spout.

All products in 40 Brushed stainless steel.





T36
Deck-mounted
soap dispenser.



T36L
Deck-mounted
soap dispenser with
extended nozzle.

Offering convenience and hygiene, deck-mounted soap dispensers deliver soap or lotion with ease. They seamlessly integrate into the countertop or sink and create a clean and uncluttered appearance. Their minimalist design in combination with any VOLA colour and finish can complement any style, making them a popular choice for those who appreciate both aesthetics and practicality in their fixtures.

Note, a pH neutral liquid soap can be used (pH value: 4,5 - 7,5).
Viscosity: approx.1500cP - 2000cP at 20°C.

All products in 40 Brushed stainless steel.



Left to right, top to bottom:

T65

Shower rail (standard length 700 mm) with T60 hand shower.

T34

Shower rail with T2 hand shower.

T68

T60 shower holder.

T8

T2 hand shower holder for low mounting.

T9

T2 hand shower holder for high mounting.



KV1M-500MT1

One-handle mixer with
double swivel spout,
paired with one-handle
mixer with hand
shower, in 25 Pink.

Colours

VOLA introduced colour to kitchens and bathrooms in 1970, with ten options. We now have 15 shades to choose from, offering a wide range of characters and combinations to suit every kind of space and interior scheme. Each product is painted by hand in Horsens, Denmark and is available across every product configuration.



02
Grey



04
Light blue



05
Orange



06
Light green



08
Yellow



09
Dark grey



12
Mocca



14
Bright red



15
Dark blue



17
Gloss black



18
White



21
Carmine red



25
Pink



27
Matt black



28
Matt white

Metallics

There are four metallic finishes in the VOLA standard range. These finishes provide a sophisticated and durable aesthetic, adding a touch of enduring elegance and style to any space.

*Natural brass as manufactured. Natural brass will patinate over time if left unpolished. As this is a natural process, every instance will be unique.



16
Polished chrome



19
Natural brass*



20
Brushed chrome



40
Brushed stainless steel

Exclusive Colour Series

Our Exclusive Colour Series has been developed to offer exceptional creative choice and personalisation. As these colours are not available at every VOLA dealer, please ask to be directed to the nearest Exclusive Colour Series dealer.



60
Black



61
Brushed black



62
Deep black



63
Copper



64
Brushed copper



65
Gold



68
Silver



70
Brushed gold

2411C-071S T17

One-handle mixer
with two-way diverter
to fixed bath spout and
Round-head hand shower
with holder. Shown with
two matching towel hooks.

All products in
19 Natural brass.







Continuing to craft a legacy

At VOLA, we believe that good design, craftsmanship and architecture are integral to creating a better future. The VOLA Academy was designed as a space at our factory in Horsens with the aim of sharing this philosophy and collaborating with people with shared interests and values.

We invite architects, interior designers and plumbers to see our processes and hand-craftsmanship in person and to build important relationships, including training on how to install our products. It's a two-way process, with their feedback being invaluable to our product development. It goes much further than our products. We want to encourage a far greater understanding of our unique design and why it works so effectively, the options offered by our modular system and why VOLA is leading the way in repairability and responsibility.

The VOLA Academy is also where we hold events and talks. We also offer staff training, from craftsmanship techniques to more holistic activities to enhance wellbeing. It's all part of what makes VOLA unique and is integral to who we are.





1969



2019



Awards

VOLA continues to win awards, with every new product representing a fusion of timeless design and manufacturing excellence. From the debut of Arne Jacobsen's very first creation, through to contemporary products designed by Link Arkitektur, the architects of the VOLA Academy, VOLA has been synonymous with innovation and elegance, exhibited and honoured internationally. We continue to ensure that water, wellness, health and happiness are integral elements of contemporary architecture.

Selected for design collections at:

Museum of Modern Art, New York
Museum für Angewandte Kunst, Köln
Cincinnati Art Museum, Cincinnati
Staatliches Museum für angewandte Kunst, Munich
Stedelijk Museum, Amsterdam
Designmuseum Denmark, Copenhagen

Over the years, VOLA has been selected for inclusion in many prestigious projects, including:

The Museum der Moderne, Salzburg • The Scottish Parliament Building, Edinburgh • The National Assembly, Paris • Vlaams Parlement, Brussels • Pinakothek der Moderne, Munich • The German Parliament, Berlin • Federal Chancellor's Office, Berlin • The Gherkin, London by Norman Foster + Partners • The National Museum of Modern Art of Tokyo • Victoria and Albert Museum, London • Museo Picasso, Málaga • Kunsthaus, Zürich • Oslo Opera House • Musikkens Hus, Aalborg, Denmark • ARoS Aarhus Art Museum, Denmark • The Royal Danish Playhouse, Copenhagen • Park Hyatt Seoul Hotel, South Korea • Aldar Central Market, Abu Dhabi • Armani Hotel Dubai, Dubai • The Landmark Mandarin Oriental Hotel, Hong Kong • Mondrian London Hotel, London by Tom Dixon • Royalton Hotel, New York • Collège des Bernadins, Paris

VOLA is very proud to have been chosen for the following awards:

1969 id-prisen
1981 Internationaler Innenarchitektur-Preis für Ausbau-Produkte
1990 Busse Longlife Design Award
1995 ID-klassiker prisen
2003 Good Design Award. VOLA HV1E
Presented by The Chicago Athenaeum Museum of Architecture and Design
2005 Good Design Award. VOLA 050
Presented by The Chicago Athenaeum Museum of Architecture and Design
2006 Home Award - The American Kitchen and Bath Award. VOLA 050
2007 Good Design Award. VOLA FS1
Presented by The Chicago Athenaeum Museum of Architecture and Design
2009 Good Design Award. VOLA FS3, VOLA T39
Presented by The Chicago Athenaeum Museum of Architecture and Design
2011 PlusX-Award. VOLA Round Series
Best in Innovation, Design, Functionality
Best Product of the Year 2011. VOLA RS1
2011 Good Design Award. VOLA RS1
Presented by The Chicago Athenaeum Museum of Architecture and Design
2013 German Design Award. VOLA RS1
2013 Good Design Award. VOLA 060
Presented by The Chicago Athenaeum Museum of Architecture and Design
2014 German Design Award. VOLA 060
2014 Interior Innovation Award. VOLA RS10
2015 German Design Award. VOLA RS10
2015 Iconic Awards 2015. VOLA T60 Good Design Award 2015. VOLA T60
2016 German Design Award. VOLA 080W
2016 German Design Award 2016. VOLA T60 Special Mention
2016 Iconic Award. Interior Innovation: VOLA 070W
2017 Plus X Award. VOLA T60. High quality and Design Award
2019 German Design Award. VOLA 111
2021 Stylepark Selected Award. VOLA RS11
2021 German Brand Award. Excellence in Brand Strategy and Creation
2022 Iconic Award. Best of Best Award. VOLA RS11
2023 German Design Award. VOLA RS11

Accreditations

Quality is essential at every stage of our production process. Our strict procedures ensure that we meet or exceed industry standards globally. VOLA has the following quality approvals:

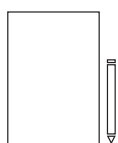




We're here to assist you with your project

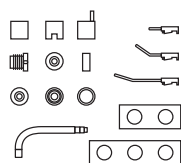
Quality service is as important to us as our products. From inspiration to installation, our knowledgeable specialists are here to help. They can help you to create your tailor-made solutions and provide

important advice for individual projects, down to the smallest detail. They are a link between architects, interior designers, sales teams, clients and installers.



1. Inspiration

We assist you with finding your design solution, the costing and project planning.



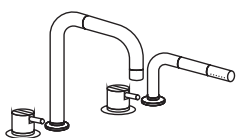
2. Specification

With over one million possible combinations of products, finish and colours available, we assist you in specifying the correct modular specification.



3. Ordering

A dedicated client service representative will confirm your order details and delivery arrangements and your VOLA product is then made to order.



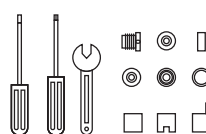
4. Installation

We provide support and installation guides for all VOLA products.



5. Upkeep

We offer guidance on how to ensure your products will last a lifetime.



6. Service and repair

We pride ourselves on ensuring a long life for our products and can assist with any servicing, repair or replacement parts for every product ever made.

Subsidiaries

AUSTRALIA

VOLA Australia
94 Wellington Street
VIC 3066 Collingwood
Tel: +61 402 372 480
sales@vola.com.au
www.vola.com

Bathroom X Flagship showroom
418 Crown Street
NSW 2010 Surry Hills
Tel: +61 433 927 440
sales@bathroomx.com.au
www.bathroomx.com.au

Bathroom X Flagship showroom
396 Pittwater Road
NSW 2100 North Manly
Tel: +61 424 412 284
sales@bathroomx.com.au
www.bathroomx.com.au

E&S Chadstone
675-685 Warrigal Rd, level 1
VIC, 3148 Chadstone
chadstone@eands.com.au
www.eands.com.au

Candana Design
120 Edgecliff Road
NSW 2025 Woollahra
Tel: +61 2 9389 8631
marc@candana.com.au
www.candana.com.au

Mary Noall Pty Ltd
Canterbury Road
VIC 3206 Middle Park
Tel: +61 3 9690 1327
Fax: +61 3 9699 4282
nick@marynoall.com.au
www.marynoall.com.au

Blackrock Supplies Pty. Ltd.
1 Cessnock Street, Fyshwick
ACT 2609 Canberra
Tel: +61 2 6280 0066
stefano@blackrocktiles.com.au
www.blackrocktiles.com.au

Elite Bathware & Tiles
948 Stanley Street
QLD 4169 East Brisbane
Tel: +61 7 3391 1399
Fax: +61 7 3391 1059
michele@elitebathware.com.au
www.elitebathware.com.au

Sea of White
Suite 4, 22 King Edward Road
WA 6017 Osborne Park
Tel: +61 8 9344 1500
Fax: +61 8 9344 1499
info@seaofwhite.com.au
www.seaofwhite.com.au

BELGIË

VOLA Belux
Tour & Taxis
Havenlaan 86C/B2
1000 - Brussel
Tel: 02 465 96 00
sales@vola.be
www.vola.be

CANADA

Hastings Bath Collection
711-8 Koehler Avenue
Ronkonkoma, N.Y. 11779
Tel: 631-285-3330
Fax: 631-285-3342
vola@hastingsbath.com
www.hastingsbathcollection.com

ČESKÁ REPUBLIKA

LAVARE, s.r.o.
Bohunická 576/52
CZ - 619 00 Brno-jih-Dolní Heršpice
Tel: +420 777 969 999
info@lavare.cz
www.lavare.cz

CHINA

Shanghai G-CASA International
Trading Co. Ltd.
Rm 518, Silver Building, Shangguang
Xuhui Center, No.407, Yishan Rd
200030 Shanghai
Tel: 861 8601 684766
order@g-casa.cn

Badeluxe Trading Limited
Unit 103, Block 9, No.358
Kang Ding Road,
Jing An District
Shanghai
Tel: (021) 6273 0238
sales@badeluxe.com

Design Republic
511 Juangning Road
200041
Shanghai
Tel: 021 6176 7088
info@thedesignrepublic.com
www.thedesignrepublic.com

DANMARK

VOLA A/S
Lunavej 2
8700 Horsens
Tel: +45 7023 5500
sales@vola.dk
www.vola.com

VOLA Showroom København
Frederiksborggade 43, 1. tv
1360 København K
Tel: +45 7023 5500
sales@vola.dk
www.vola.dk

VOLA Showroom Aarhus
Kystvejen 5
8000 Aarhus C
Tel: +45 7023 5500
sales@vola.dk
www.vola.com

DEUTSCHLAND

VOLA GmbH
Schwanthalerstr. 75A
80336 München
Tel: 089/599959-0
Fax: 089/599959-90
vola@vola.de
www.vola.de

ESPAÑA

VOLA Spain
C/ Navarra, 48
08440 Cardedeu
Barcelona
Tel: +34 938 376 669
vola@volaspain.es
www.vola.es

ESTONIA

Hals Interiors OÜ
Kivikülv 8 / Tuulikuu tee 7
12915 Tallinn
Tel: +372 7151410
hals@hals.ee
www.hals.ee

FRANCE

sopha industries
44, rue Blanche
75009 Paris
Tel: 01 42 81 25 85
Fax: 01 40 16 45 18
sopha@sopha.fr
www.sopha.fr

GREAT BRITAIN

VOLA UK Ltd.
Highfield House
108 The Hawthorns
Flitwick MK45 1FN
Tel: 01525 720111
sales@vola.co.uk
www.vola.co.uk

VOLA International Studio
74 Margaret Street
London W1W 8SU
Tel.: 020 7580 7722
sales@vola.co.uk
www.vola.co.uk

HELLAS

moda bagno s.a.
50 Anapafseos Street
Vrilissia 15 235, Athens
Tel: 210 8036700
info@modabagno.gr
www.modabagno.gr

HONG KONG

H2O Pro Ltd.
16th Floor First Commercial Building
33 Leighton Road
Hong Kong
Tel: 852 2891 6860
Fax: 852 2834 3029
info@h2opro.com.hk
www.ebon.com.hk

ISLAND

Tengi ehf
Smiðjuvegur 76
200 Kópavogur
Tel: 414-1000
tengi@tengi.is
www.tengi.is

ISRAEL

Via Arkadia Ltd.
7-9 Halechi street
51200 Bnei Brak
Tel: 972-3-9394666
info@via-arkadia.co.il
www.via-arkadia.co.il

ITALIA

RAPSEL International S.R.L.
Via A. Volta, 13
20019 Settimo Milanese (MI)
Tel: 02 3355981
Fax: 02 33501306
commercial@rapselint.it
www.rapsel.it

KOREA

VOLA Showroom Korea
11-3, Bukchon-ro 7-gil
Jongno-gu
03055 Seoul
Tel: +82 70 8833 5200
info.kr@vola.com
www.vola.com

Innometsa
127, Yangjaecheon-ro
Seocho-gu
06747 Seoul
Tel: +82 2 3463 7752
sales@innometsa.com
www.innometsa.com

Innometsa DAEGU
177-1, Palgong-ro
Dong-gu, Daegu-si
41029 Daegu
Tel: +82 53 986 3300
daegu@innometsa.com

Innometsa GIMHAE
1154, Gimhae-daero
Hallim-myeon, Gimhae-si
50851 Gimhae
Tel: +82 55 346 1472
gimhae@innometsa.com

KYPRIAKI DIMOKRATIA

S.C. Nicolaidis Ltd.
3, Gregoriou Karekla str.
Strovolos
P.O. Box 21703
1512 Nicosia
Tel: 22 813 200
Fax: 22 424 803
info@oikia.eu

LEBANON

Geahchan Group
Geahchan Building
Hayek Round About
Beirut
Tel: 01. 480 520
Fax: 01. 496 607
info@geahchangroup.com
www.geahchangroup.com

MEXICO

Productos de Latón de Alta Calidad
General Juan Cano 27
Col San Miguel Chapultepec
MX-11850
Mexico D.F.
Tel: +52 55 2614 5211
WA +52 55 3358 6064
info@plac.com.mx
www.plac.com.mx

NEDERLAND

VOLA Nederland BV
Valkenburgerstraat 23
1011 MG Amsterdam
Tel: 020 36 56 356
info.nl@vola.com
www.vola.com

NEW ZEALAND

Metrix
155 The Strand, P.O. Box 100-840
NSMC 0745
NZ 1010
Parnell Auckland
Tel: 09 379 7399
Fax: 09 379 7035
info@metrix.co.nz
www.metrix.co.nz

NIPPON

Cera Trading Ltd.
Nogizaka BLDG., 1-24-3, Minami
Aoyama, Minato-ku
107-0062
Tokyo
Tel: +81 3-3796-6151
Fax: +81 3-3796-6151
cera_que_01@jb.foto.com
www.cera.co.jp

NORGE

VOLA Showroom
shelby teknikk AS
Drammensveien 130
0277 Oslo
Tel: +47 51 46 18 00
post@shelby.no
www.vola.com

shelby teknikk as
Varbergveien 60
4371 Egersund
Tel: +47 51 46 18 00
post@shelby.no
www.shelby.no

ÖSTERREICH

VOLA Vertriebs GmbH
Kandlgasse 19
1070 Wien
Tel: 01/526 39 71-0
Fax: 01/526 39 71-20
info@vola.at
www.vola.at

PHILIPPINES

Crossmerchant Inc.
102, 20th Avenue
PH 1109
Cubao Quezon City
Tel: +63 2634 3161
ting@futureflooring.com.ph
www.lucerneluxe.com

POLONIA

Mirad
Al. Nadwisiańska 262
05-420
Józefów
Tel: 22 780 6382
mirad@mirad.pl
www.mirad.pl

QATAR

Sanipex Qatar
310 Airport RD Building 332
Po box 16450
Doha
Tel: +974 44380200
Fax: +974 44380223
Info@sanipexgroup.com
www.sanipexgroup.com

SCHWEIZ

VOLA AG
Bauarena, 2. Stock
Industriestrasse 18
8604 Volketswil
Tel: 044/955 18 18
sales@vola.ch
www.vola.ch

SINGAPORE

VolumeFive Pte Ltd
102E Pasir Panjang Road
01-01 Citilink Warehouse Complex
SG 118529 Singapore
Tel: +65 6348 2508
Fax: +65 6348 2507
sales@volumefivehome.com
www.volumefive.com

SLOVENIA

Moderna d.o.o.
Jarska cesta 10b
SI-1000 Ljubljana
Tel: +386 590 200 95
info@moderna.si
www.moderna.si

SOUTH AFRICA

Still Lifesyles CC
The Old Cape Quarter,
Shop OF001101
72 De Waterkant Street, Green Point
8005 Cape Town
Tel: 021 421 9970
Fax: 021 421 9971
info@stillbathrooms.co.za
www.stillbathrooms.com

SUOMI

INNO-TUOTE OY
Tähdennontie 9
02240 Espoo
Tel: +358 9 8870 380
info@inno.fi
www.inno.fi

SVERIGE

VOLA AB Showroom
Storgatan 24
114 55 Stockholm
Tel: +46 08-6602801
sales@vola.se
www.vola.se

UNITED ARAB EMIRATES

Sanipex UAE
Sheik Zayed Road
P.O. Box 30871
Dubai
Tel: 971 4 339 5660
Fax: 971 4 339 5671
Info@sanipexgroup.com
www.sanipexdubai.com

UNITED STATES

Hastings Bath Collection
711-8 Koehler Avenue
Ronkonkoma, NY 11779
Tel: 631-285-3330
Fax: 631-285-3342
vola@hastingsbath.com
www.hastingsbathcollection.com

Pages; Project; Architect/Designer

Front	House in Fontinha; Aires Mateus	45	Kenwood Lee House; Cousins & Cousins, New Wave London	86-87	Stone House; Architecture for London
2-3	Villa Överby, Värmdö; John Robert Nilsson Arkitektkontor	46-47	Spyon Cop; Brown & Brown	88-89	ML House; Element Architecten
4-5	Village School House; Norm Architects	48-49	Villa delle Rocce; Mimmo Peraino	89	bottom: The Off White House; Niels Maier
6	Danmark's Nationalbank; Arne Jacobsen	50	Villa Amsterdam; Marmol Radziner	90-91	The Farm; Anders Barslund
7	top left: Arne Jacobsen; Duffy Archive	51	Islington House; McLaren Excell	92-93	Villa N1; Jonas Lindvall A&D
8	Low Energy House; Architecture for London	52-53	Low Energy House; Architecture for London	94	Low Energy House; Architecture for London
9	Islington House; McLaren Excell	54	Villa delle Rocce; Mimmo Peraino	95	Villa Amsterdam; Marmol Radziner
10-11	Low Energy House; Architecture for London	55	Klobbudden; John Robert Nilsson Arkitektkontor	96-97	House in Fontinha; Aires Mateus
15	London Woodland House; William Smalley	56	Camp Roig 31; DuRietz Design and Development	98-99	Villa M2; Jonas Lindvall A&D
16	Calvin Klein Inc. Offices; Christian Halleröd	57	Collins Beach House; Tobias Partners	100-101	Klobbudden; John Robert Nilsson Arkitektkontor
17	top left: Residence SE; Steenhuyse Signature Spaces	58-59	Villa Saltsjöbaden; John Robert Nilsson Arkitektkontor and owner	102-103	Circular Family Home; Jan Henrik Jansen Arkitekter
17	bottom left: Rörbäck Forest Retreat; Gipp Arkitektur, Anna Sandgren	60	Four Pillars Laboratory; YSG	104-105	Árborg House; PK Arkitektar
18	Refuge Lieptgas; Nickisch Sano Walder Architekten	61	Village School House; Norm Architects	106	Project CLA; Interiorarchitect Britt Van Namen
19-25	VOLA factory	62-63	Klobbudden; John Robert Nilsson Arkitektkontor	107	Coastal Home; Decus, Tim Wright Architects
26-27	Fjord Boat House, The Audo, Restaurang Äng; Norm Architects	64-65	Villa Facius; N+P Arkitektur	108-109	Klobbudden; John Robert Nilsson Arkitektkontor
28-29	Ett Hem; Studiollse	66-67	Villa H16; ARDESS Arkitektur	110	Stone House; Architecture for London
30-31	Designmuseum Danmark; OEO Studio	68-69	Rörbäck Forest Retreat; Gipp Arkitektur, Anna Sandgren	111	Little Parndon; Templeton Architects
32-33	Norwegian Mountain Cabin; Slow Design Studio	70-71	ML House; Element Architecten	112	ML House; Element Architecten
34-35	ML House; Element Architecten	72-73	House of Yards; Marte.Marte Architects	113	Villa Amsterdam; Marmol Radziner
36-37	Kenwood Lee House; Cousins & Cousins, New Wave London	74-75	Rörbäck Forest Retreat; Gipp Arkitektur, Anna Sandgren	114-115	Villa delle Rocce; Mimmo Peraino
39	Gunnamatta House; Studio JHA	76	Brick 99; am designs	116-117	Klobbudden; John Robert Nilsson Arkitektkontor
40	Low Energy House; Architecture for London	77	Tour Maubourg; JAUNE	118-119	House in Fontinha; Aires Mateus
42	Mornington Terrace; Undercover Architecture	78	The Rough House; Niels Maier	120-121	Rörbäck Forest Retreat; Gipp Arkitektur, Anna Sandgren
43	Off-grid cabin in Loch Fyne; The Kabn Company	79	Park Corner Barn; McLaren Excell	122-123	Klobbudden; John Robert Nilsson Arkitektkontor
44	Residence OF; MVH Architects	80-81	Kenwood Lee House; Cousins & Cousins, New Wave London	124	S House; Nicholas Schuybroek Architects
		82-83	Villa Saltsjöbaden; John Robert Nilsson Arkitektkontor and owner	125	Low Energy House; Architecture for London
		84-85	The Rough House; Niels Maier	126-127	Tabernacle Street; Juliano Cordano

		Photographers	Pages
128-129	Residence DD; Pieter Vanrenterghem	Adam Mørk	6
130-131	House in Fontinha; Aires Mateus	Alex Wilson	Front, 8, 10-11, 32-37, 40, 43, 45-49, 52-55, 70-73, 79-81, 86-89, 94, 96-97, 100-101, 104-105, 110, 112, 114-115, 118-119, 122-123, 125-127, 130-137, 143-153, 156, 160-167, Back
132-133	Villa delle Rocce; Mimmo Peraino		
134-137	Belgium Spa; Rietveld Projects		
138	Inspired by Oslo Apartment; LCLA Office (Luis Callejas & Charlotte Hansson)	Alexander James	15
140-41	Designmuseum Danmark; OEO Studio	Andrea Papini	17, 50, 58-59, 62-63, 68-69, 74-75, 78, 82-84, 92-93, 95, 98-99, 108-109, 113, 116-117, 120-121, 154-155, 178-179
143	Sophie's Soho; Trellik Design Studio		
144-145	Marylebone House; McLaren Excell	Annick Vernimmen	44
146-149	Villa delle Rocce; Mimmo Peraino	Anson Smart	39, 60, 107, 158-159
152-153	Árborg House; PK Arkitektar	Claessens & Deschamps	124
154-155	Klobbudden; John Robert Nilsson Arkitektkontor	Duffy Archive	7
156	ML House; Element Architecten	Erik Stackpole Undéhn	16
158-159	Coastal Home; Decus, Tim Wright Architects	Irina Boersma	4-5, 30-31, 61, 64-65, 66-67, 90-91, 140-41, 171
160-163	At The Chapel; Mackenzie Wheeler Architects & Designers	Jack Flynn	25
164-167	Stone House; Architecture for London	Jonas Bjerre-Poulsen	26-27
168	Crane in the Sky; YSG	Justin Alexander	19, 57
171	Village School House; Norm Architects	Magnus Mårding	28-29
172-173	VOLA Academy	Michelle Young	42
174	Green bathroom; Arjaan De Feyter Interior Architects	Mikkel Vang	2-3, 18
178-179	Klobbudden; John Robert Nilsson Arkitektkontor	Morten Koldby	19, 23-24
Back	House in Fontinha; Aires Mateus	Nick David	22
		Piet-Albert Goethals	56, 174
		Prue Ruscoe	168
		Silje Chantel Johnsen:	29
		Sharyn Cairns	111
		Thomas De Bruyne – Cafeine	17, 76, 89, 106, 128-129
		Thomas Mikkelsen	17, 172-173
		Toby Mitchell	9, 51
		Yannick Labrousse	77

VOLA A/S
Lunavej 2
DK-8700 Horsens
Tel: +45 70 23 55 00
sales@vola.dk
www.vola.dk

